

INTERIOR || Outputs.

✘ SELECTED || Works.



PRELUDE

"I am rather suspicious of this imperative of creativity: I think first of all you need a foundation of exactness, technique, concreteness, a sense of reality. Only a certain prosaic solidity can give birth to creativity: Fantasy is like jam; you have to spread it on a solid slice of bread. If not, it remains a shapeless thing...out of which you can't make anything." [...]

1979, Italo Calvino.



INDEX || Built Projects.

CHACUN SON CINÉMA - Metropolitan Suites

THE HOUSE OF NOTARY - Notary's office
renovation

AMICI MIEI - DO' VIZI Bistrot

MALICE - Thrilling renovation of 140 square
meters flat

STAND BY ME - Apartment in 2 Rooms

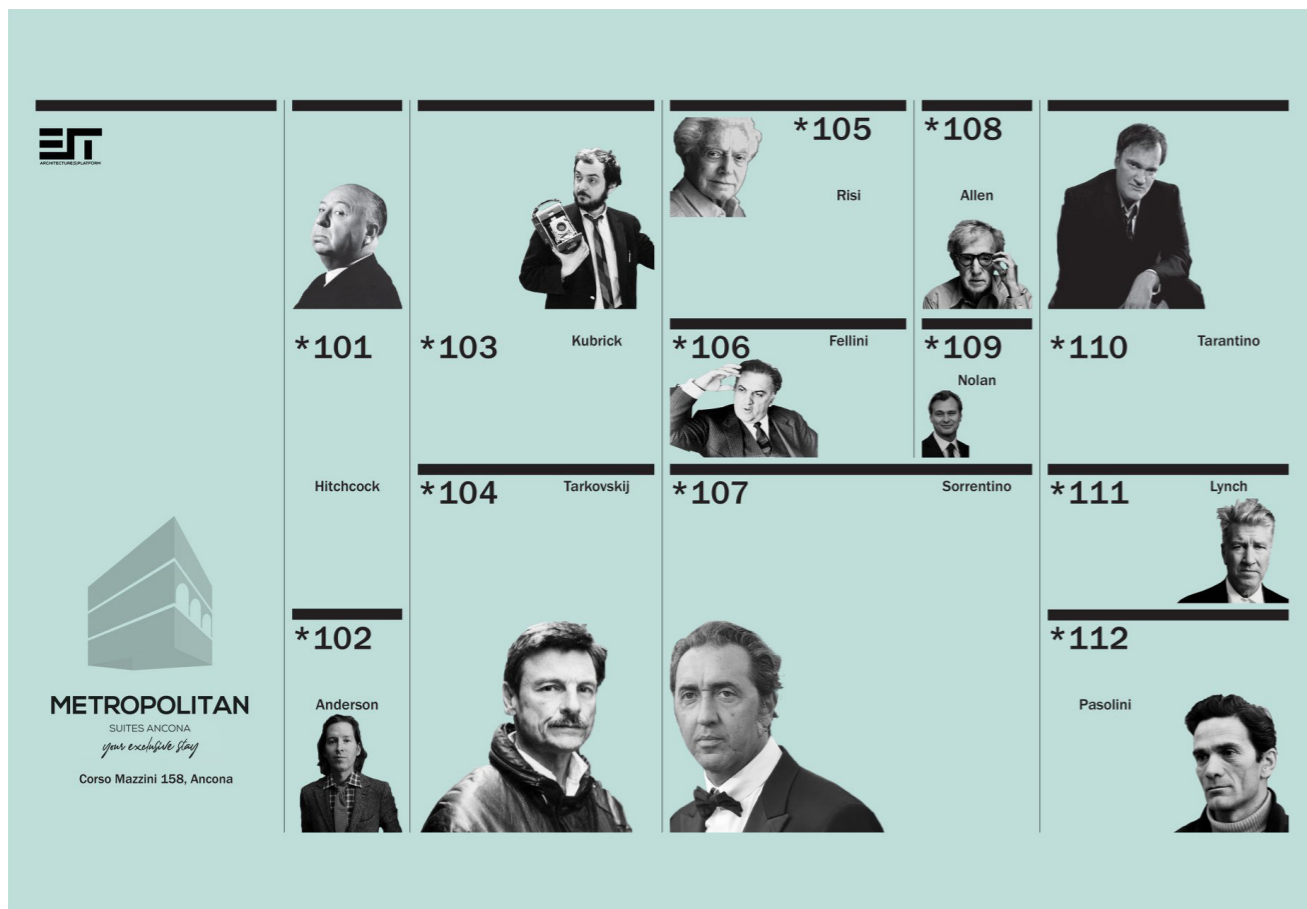
DORIAN GRAY - SUBLIME Shop Invention

CHACUN SON CINÉMA

12 SUITES 12 MOVIE 12 DIRECTOR

[...] "Perhaps the only difference between me and other people is that I've always demanded more from the sunset. More spectacular colors when the sun hit the horizon. That's perhaps my only sin." [...]

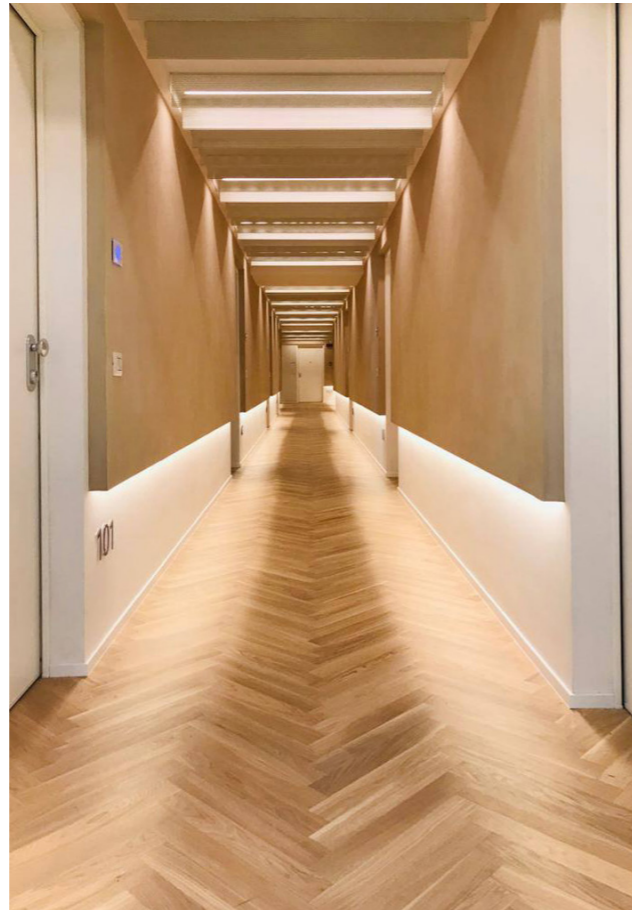
"The Metropolitan" is a 5-floor building in the heart of Ancona's centre. Its urbanistic affair is quite troubled and was worn to shreds in the years with a never-ending dispute between the municipality and private owners. The Metropolitan was a prestigious movie theatre and lived its roaring years until the early 90ties when the cinema closed down. This sad fact was the beginning of a comedy-drama that involved a series of ownership in a weird ballet of permission and property passage. After twenty years of immobility, the sides found agreement and, the five floors new ownership with an accurate scheme: first-floor commercial, second and third-floor office, fourth-floor hospitality, fifth-floor residential. Our client entrusted us with the design of the 4th floor. The project provided for 12 suite, different in dimension and so also in class (luxury, deluxe and supreme) with kitchen, living room and at least two sleeping places an additional bed. All the suites were supposed to have a common thread. We decided to be inspired by the "Genius loci" of the site. So we designed the space of 12 suites with custom furniture, one different from the others and dedicated to 12 movies and 12 directors. Colours, wallpapers and any single detail of the room are selected tacking in mind the style of a precise film or a particular director. The restyling of the hallway and the entrance is a real "homage" to ex Metropolitan cinéma.



DATE: 2019

LOCATION: ANCONA (AN), IT

CLIENT: PRIVATE



Metropolitan Hallway



Suite 110 - "Tarantino"



Suite 101 - "Hitchcock"



Suite 109 - "Nolan"



Suite 103 - "Kubrick"



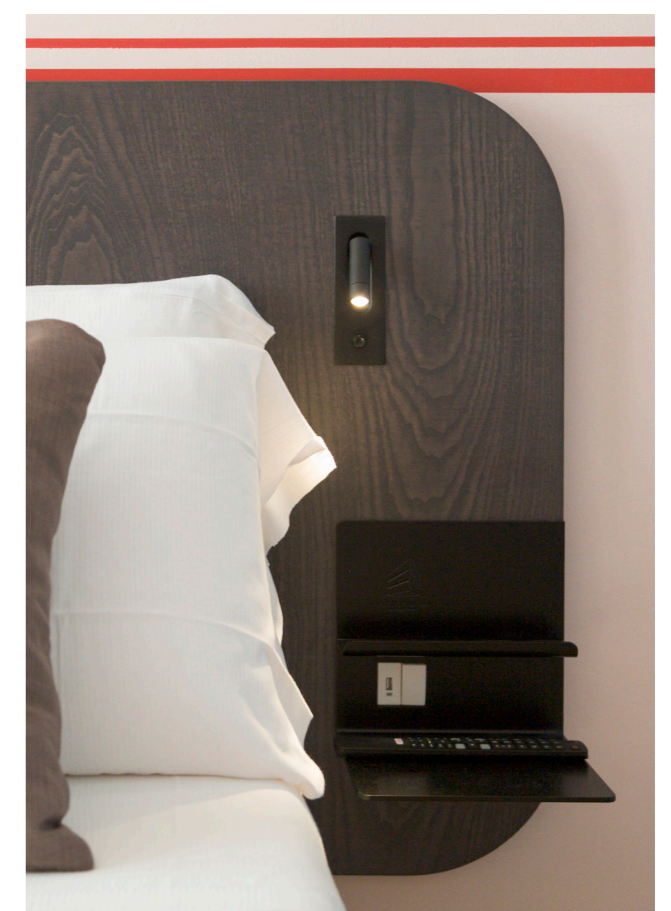
Suites 111 - "Lynch"



Bedroom details



INTERIOR



Bed details



Office's entry

THE HOUSE OF NOTARY

NOTARY'S OFFICE RENOVATION

"The only certain rule is the one that Aristotle already gave: do not dispute with anyone and everyone, but only with those people you know who are intelligent enough to avoid saying things that are so stupid as to expose themselves to humiliation, who appreciate the truth, and who gladly listen to good reasons, even when the opponent claims them, and who are balanced enough to bear a defeat when the truth is on the other side."

When we surveyed the notary's office, the situation was a real mess. The space was full of shabby old furniture, and nothing was in the right place. Old libraries and sloppy storage crushed any rooms, and neither the reception spaces nor the executive ones worked for its function. Employees complained about the lack of tidy space and about the bad lighting of the rooms. The owner complained about the style and functionality of the place. He wanted to wholly renew the structure and push to set up a new layout with a different mood. He asked for something innovative that combined some of his historical furniture with contemporary components. First, we reset the interior distribution of the space along the existing hallway and created a clear path: reception area, offices, and services, chamber of the notary. We designed the entrance as a space with a reception, waiting room, and meeting room. We studied a coffered ceiling to characterize these representative areas. Due to the outdated structural condition of the floor, we used superlight composite materials to realize the false ceiling. It was a good choice also because we use an ecologic and innovative material: recyclable and humidity resistant. In the waffle structure of the suspended ceiling, we integrated a domotic system for the lighting. For what concerns furniture, we studied how to renew old pieces, and we used local artisans to paint and refine seats. We radically changed bathrooms and employees' rooms. After all, we focused on the notary's chamber: the main room that resumes what he had in mind for the renovation. A geometrical reflecting suspended ceiling integrates lighting and conditioning and gives a new perspective to the room. Old-fashioned libraries, wholly restored and red color painted in detail, are coordinated with contemporary components in a balanced mix with the "Genius Loci" of the place. "The house of notary" is a project that combines innovative materials and old-style decoration and furnishing.

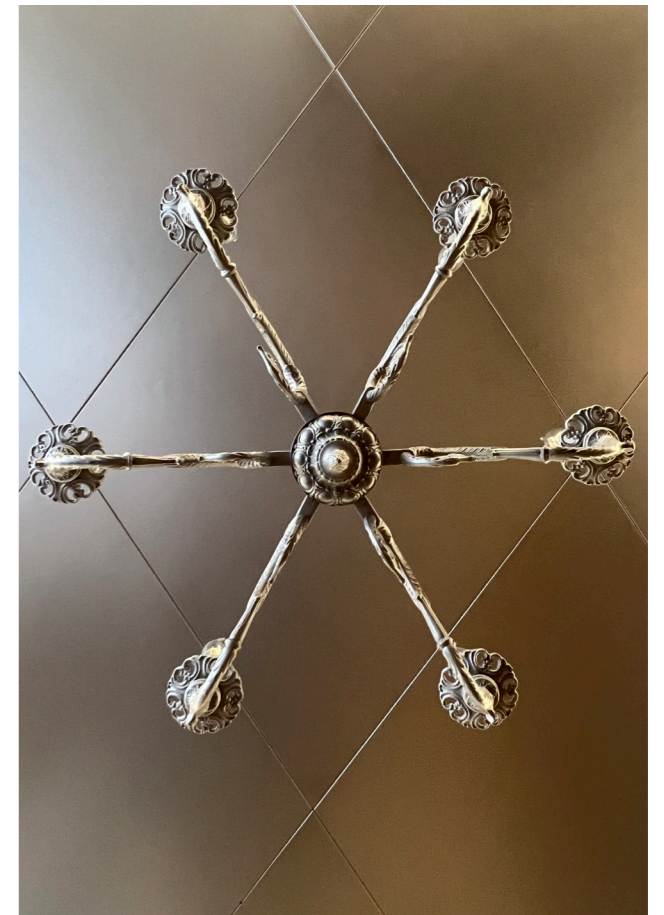
DATE: 2022

LOCATION: ANCONA (AN), IT

CLIENT: PRIVATE



Notary's chamber



Details



AMICI MIEI

ORGANIC SURFACE AND RECYCLED MATERIALS FOR A NEW BISTROT

“People who love to eat are always the best people. To eat is a necessity, but to eat intelligently is an art. We all eat, and it would be a sad waste of opportunity to eat badly. If you really want to make a friend, go to someone’s house and eat with him...the people who give you their food give you their heart.”

“Do’ Vizi Bistrot” tells the story of two guys, their dreams and speaks about travel between traditional taverns, typical products and about several nights at the open sky. The story starts with the discovery of space dug in the rocks inside a historical building overlooking the ancient fisherman’s road of Ancona. Nowadays this street is the scenario of the daily pilgrimage of tourists, families, businessmen and “felons”, all of them to get to the Balcanic lands. The chronicle articulated by discoveries of objects that emerge since the first demolition: an ancient cavern, a cast-iron pipe of an abandoned fishing vessel, steel and wood of all sorts. So the regeneration of the discovered objects becomes an inevitable assignment. We designed any components as a plug between past and present, and we gave them a new function.

DATE: 2018

LOCATION: ANCONA (AN), IT

CLIENT: DO’ VIZI BISTROT



Details

EST PLATFORM



Furniture details

INTERIOR



MALICE

THRILLING RENOVATION OF 140 SQUARE METERS FLAT

"The question is, 'Do I have a 'God Complex'?...which makes me wonder if this lawyer has any idea as to the kind of grades one has to receive in college to be accepted at a top medical school. Or if you have the vaguest clue as to how talented someone has to be to lead a surgical team. I have an M.D. from Harvard, I am board certified in cardio-thoracic medicine and trauma surgery, I have been awarded citations from seven different medical boards in New England, and I am never, ever sick at sea. So I ask you; when someone goes into that chapel and they fall on their knees and they pray to God that their wife doesn't miscarry or that their daughter doesn't bleed to death or that their mother doesn't suffer acute neural trauma from postoperative shock, who do you think they're praying to? Now, go ahead and read your Bible, Dennis, and you go to your church, and, with any luck, you might win the annual raffle. But if you're looking for God, he was in operating room number two on November 17, and he doesn't like to be second-guessed. You ask me if I have a God complex. Let me tell you something: I am God."

The interior project based its concept on building a close relationship between the house and its surroundings paying attention to the textures and colors of each material chosen, to the detriment of some more technological solutions. We conceived a space that is a synthesis of the memory of a rural house melted with contemporary components (for example double-sided brick fireplace that we turned into a clean technical steel glass fireplace). We studied a chromatic palette that is a central element in the relation between building and site and that, in the interiors, links each space with the meanings that we want to express for those who use it and experience it. We availed the same strategy in the choice of materials. We selected materiality "without time": iron for inserts and intrados, material plaster for walls, ash wood for the floor, and natural stones for bathroom finishing. This choice allowed us to express a formal austerity while continuously valuing textures and colors linked to nature. The large windows enhance the landscape as a constant presence along the house, and the natural light through those gently invades the whole interior, playing with the surfaces.

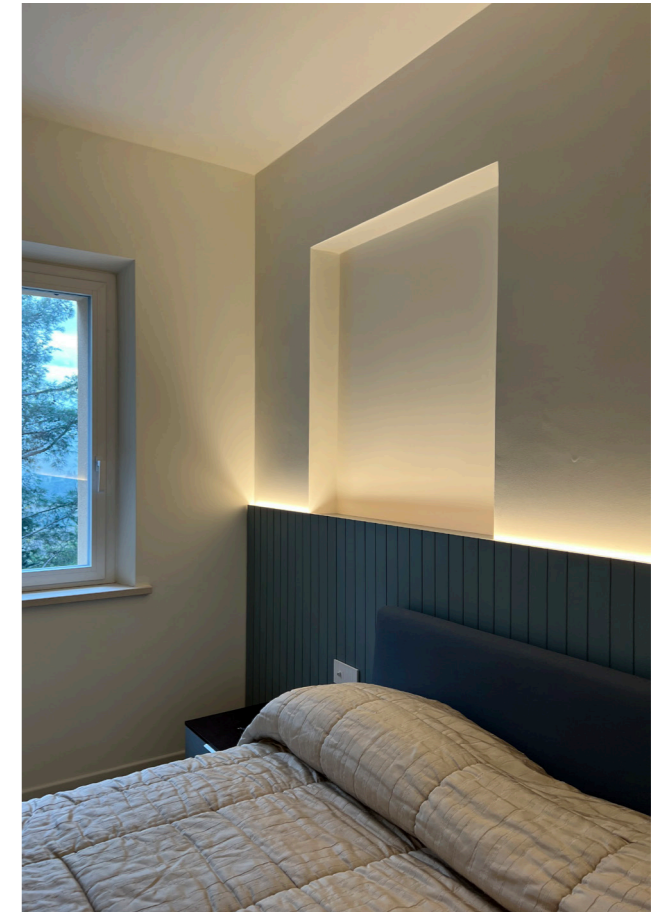


Living Details

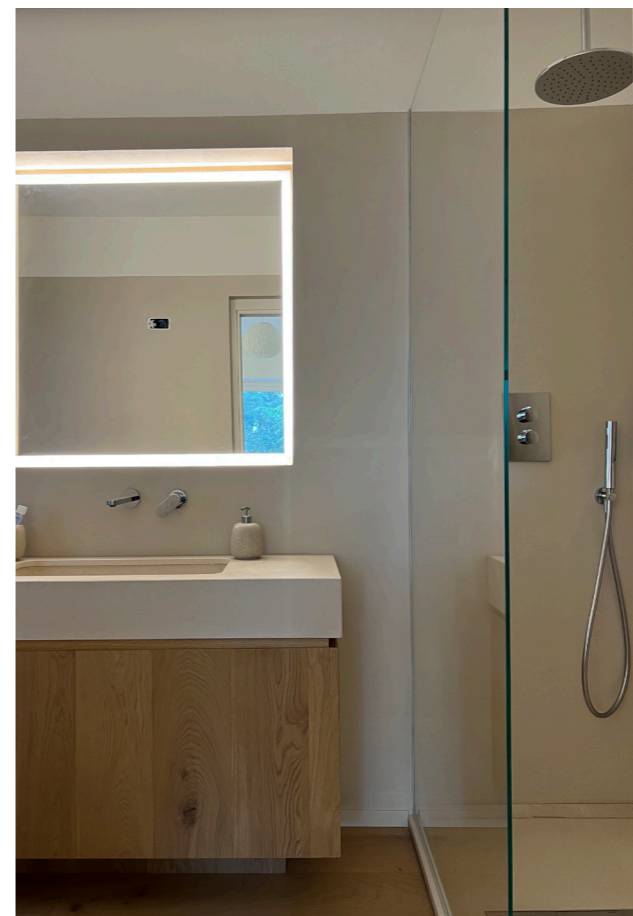
DATE: 2022

LOCATION: ANCONA (AN), IT

CLIENT: PRIVATE



Kitchen Details



Master bedroom and bathrooms



STAND BY ME

A LITTLE APARTMENT BORN FROM AN EX SHOEMAKER LAB

"[...] It's about cultures; they widen the dimensions of the present, they vanquish the walls of the narrow perception. They make you look forward to experiencing a new life that is full of unusual things."

"Stand by me" is a conversion of a small shoemaker lab into a summer vacation apartment. "[...] This was a shoemaker's lab once! Did you know?". He had to be in his fifties, big hands and a lively gaze typical of someone who knows his trade. "I poured this floor myself, but now, to renew the place, it needs to be smoother and brighter, do what you can. Then, I want a grand entrance that covers that kettle there and a floating table. Hey guys, I like wine! Keep it in mind. I come here on vacation from now on!"... The rest of the story is a flat playing on a few elements defining this nice loft. An entrance/pantry that hides utilities and accessories, completed with a Corian table to call up the kitchen top. To the warm colour of the rosewood, respond the thin black sections of the ceiling lamp and wall furniture that enhance the tones of the micro cement floor.

DATE: 2017

LOCATION: CIVITANOVA M. (MC), IT

CLIENT: PRIVATE



Lamp details



Furniture details



DORIAN GRAY

IRON AND PAPER INVENTIONS FOR A CLOTHING STORE

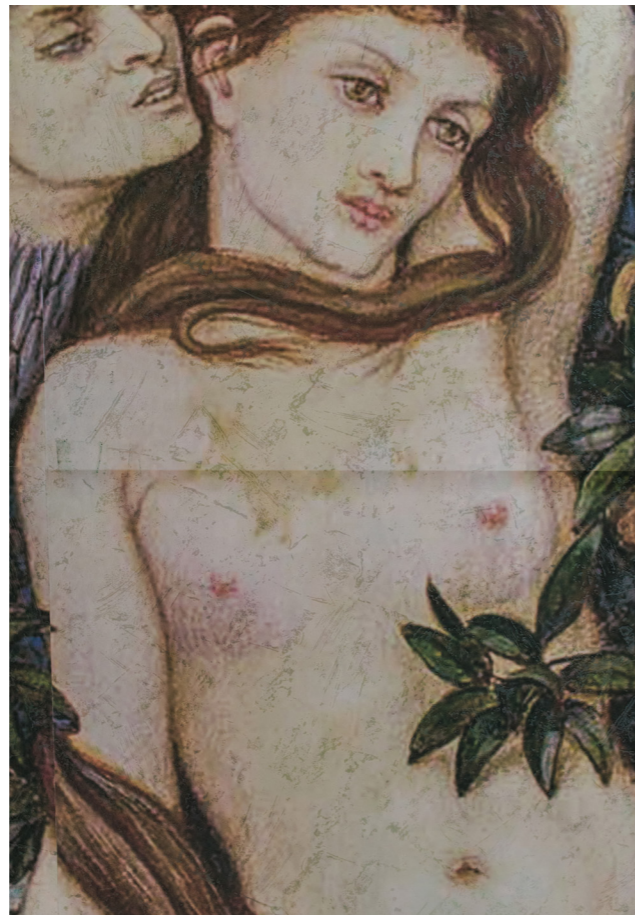
*“What of Art? It is a malady. Love? An Illusion. Religion? The fashionable substitute for Belief
You are a sceptic? Never! Scepticism is the beginning of Faith. What are you? To define is to
limit.”*

“**Sublime**” is a project that stems from the collaboration between Est platform and Nerd Srl an experienced firm in sustainable materials and technologies for furniture production. The men’s wear store has two areas: the first one is dedicated to the exposition of clothes while the second, smaller, is a marvellous room for men’s accessories. The first space is defined by a lattice of rails that restored the old soul of the slaughterhouse in a renovated way the second is characterized by a handmade wall-paper composed by a collage of portions that belong to a more than fifteen famous paintings (from Botticelli till Brueghel). The cardboard furniture of the shop includes a cash desk, a radial counter, a drop ceiling/chandelier (tailored for the accessories’ room) and a cardboard wall. The furniture is assembled without glue, so, in case of deterioration, you can change only the damaged elements. Besides this system, allows a fast updating of the objects in terms of colours shapes etc.

DATE: 2017

LOCATION: MONTE SAN GIUSTO (MC), IT

CLIENT: SUBLIME CLOTHING STORE



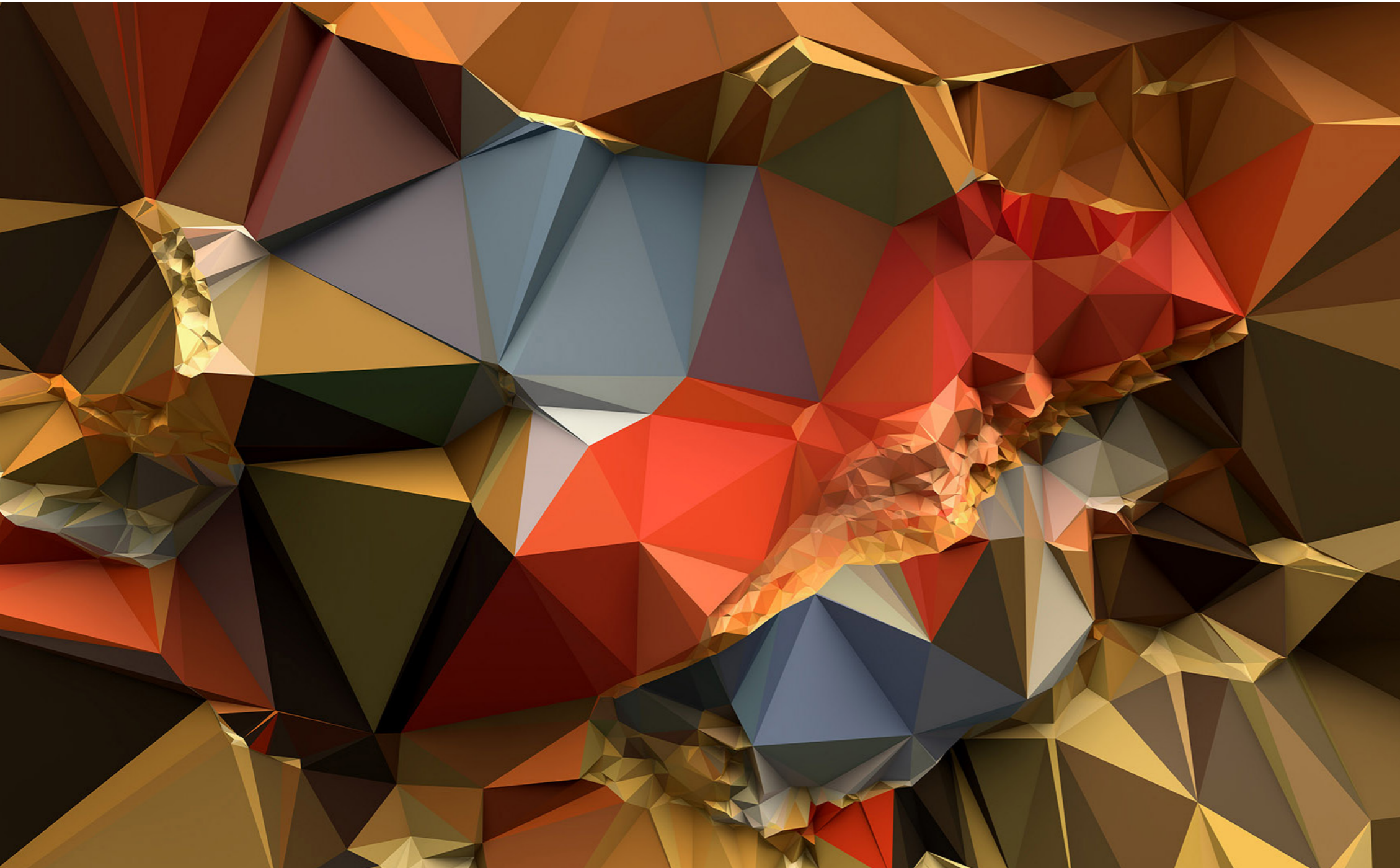
Wallpaper details

EST PLATFORM



Furniture details

INTERIOR



INDEX ||Ongoing Projects.

ASCENDING DESCENDING - SPA and rooms
between cave and city

PRESTO SARA' DOMANI - Back to the roots
planning the future

PONYO ON THE CLIFF - Figuring small spaces
and many desires

IL TORMENTO E L'ESTASI - Renaissance tale

CACHE' - Apartment retrofit



ASCENDING DESCENDING

SPA AND ROOMS BETWEEN CAVE AND CITY WALL

“It is impossible for the inhabitants of different worlds to walk or sit or stand on the same floor because they have differing conceptions of what is horizontal and what is vertical. Yet they may well share the use of the same staircase. On the top staircase illustrated here, two people are moving side by side and in the same direction, and yet one of them is going downstairs and the other upstairs. Contact between them is out of the question because they live in different worlds and therefore can have no knowledge of each other’s existence.”

“ASCENDING DESCENDING” is about an old multi-level edifice nailed into the belt city walls that is a former part of the town’s history. During the first survey, we discovered an intricate system of tunnels behind an old door. Those caves and paths were a legacy of the Middle Ages and a sort of escape route in case of assaults. The principal tunnel was well-preserved, but the development was interrupted due to a landslide. The construction, built around this structure, was like an intricate tangle of stairs designed to get you into different levels. Over the years and overall owners, the architecture had lost its logicity, so we had to solve a puzzle. What do we have to do with the caves? What are we supposed to do with all the impracticable stairs? The client wanted to create a luxury B&B with two suites with a shared spa space. He asked for two opposite styles for the rooms and to find a space for wellness facilities. We delivered a proposal that includes the following contents: a thermal pool designed from the restoration of the ancient tunnel (shared spa);

- a new steel staircase that directly connected the floors;
- a middle-aged style suite;
- a contemporary-style apartment.

We’re using innovative resins to restore the brick vaults and to isolate and sanitize the original earth floor. We applied a clay base plaster to heal the walls of the rooms, while structurally, we reinforced the brick floors with composite meshes. We completed the work with the tailor-made design of the apartment furniture.

DATE: IN PROGRESS

LOCATION: CASTELFIDARDO (AN),IT

CLIENT: PRIVATE



Entry and Stair

Bedrooms



PRESTO SARA' DOMANI

BACK TO THE ROOTS PLANNING THE FUTURE

"A plant needs roots in order to grow. With man, it is the other way around: only when he grows does he have roots and feels at home in the world"

Munich, Bavaria Germany. M. and M. are two engineers, a young couple, one French and one Italian, with a dream to live their time in a different place surrounded by nature and history. M. is from Montelupone, an ancient hilltop village officially recognized as one of the most beautiful burghs in Italy. His family lives there, and together they found a beautiful brick house on sale, nestled in the city walls. From the high level of the building, you can see a breathtaking view of the Adriatic coast, while on the other side, you can sink into the heart life of the village. The last earthquake left its sign, and the structural elements damaged needed a fixing intervention. The project came with this principal goal. For restoring walls, we'll apply composite reinforced meshes and a particular plaster that saves the texture face-to-face of the bricks. Then we planned an entire reconstruction of floors and the principal roof with wood elements except for the mezzanine at the last level. Here we designed a perforated steel deck to optimize the light flow for the underlevel. The interior project orbits around a wood-finishing block that encloses the vertical connection of the building: a steel wood-covered stair and a small lifter. We wanted to design an interior capable of generating a balance between materials of tradition (brick, iron, and earth plaster) and contemporary style. The architectural composition includes two entrances, one at the street level for cars and the other for pedestrians, at the mid-level, facing the side of the city center. From here, you get into an open space with a living and a large kitchen area. Besides that, you find a guest bathroom and the first studio room. The upper level, organized into a master bedroom with an en-suite bathroom and a walk-in closet, hosts a laundry and a second studio space. The other room is a double bedroom with a private bathroom and a wood mezzanine. Towards a perforated steel staircase, you can reach the rooftop furnished with a functional kitchen space and a terrace facing the seaside. On the lower level, we designed a private gym with a spa, a playroom, a guest room, and a guest bathroom. Going down, you get to the ancient caves of the palace, committed to the storage of wines. The outcome is a mix of past and contemporary to create something unique.

DATE: IN PROGRESS

LOCATION: MONTELUPONE (MC), IT

CLIENT: PRIVATE



Kitchen and living

Master bedroom, single bedroom and entry bathroom



PONYO ON THE CLIFF

FIGURING SMALL SPACES AND MANY DESIRES

*"Ponyo, Ponyo, Ponyo, fishy in the sea
 Tiny little fishy, who could you really be?
 Ponyo, Ponyo, Ponyo, magic sets you free
 Oh, she's a little girl with a round tummy
 Tip, tippy toe, jump, jump, and hop
 Now that I've got my legs, I cannot stop
 Pat, paddy pat, waving hello
 Come and hold hands with me, dancing we go
 My feet are skipping, my heart, too
 Happy happy are we all!
 Maybe I might love you, maybe I might love you
 So hold on tight and hold me close, you're my hero"*

"I have a tiny house in front of the sea. My grandmother bequeathed it to me. When I was a child, I used to sit down with my granny and look at the seaside. I loved the ceramic floor. I like to reinstate the original tiles and use them for the floor, even if I adore larch parquet, and I've always wanted a resin floor. Besides, I would like to create an open space, but the kitchen should be in a separate room. In the living, I wish to keep the original door frames in wood and colored glass. Can we do that? I desire a corner couch and a comfortable dining table. I would put a crystal chandelier in the middle of the house. Do you like it? I have a picture with me. For my baby boy, I would like something original. I know the surface is small, but I would like a large bed for him. Then, I would like a master bedroom painted with sea colors and two bathrooms with two wide shower cabins. You should find a solution because one of the bathrooms has a window along the walkways and I would like to save my privacy, but also I want a big mirror. I love shiny, bright, and reflective surfaces. Now, it's up to you!"

"Yes, ma'am! Yes, ma'am! Yes, ma'am, will be done!"

DATE: IN PROGRESS

LOCATION: ANCONA (AN), IT

CLIENT: PRIVATE





kitchen and bedroom



Bathroom



Master bedroom



IL TORMENTO E L'ESTASI

RENAISSANCE TALE

[...] "We are giving the world back to man, and man back to himself. Man shall no longer be vile, but noble. We shall not destroy his mind in return for an immortal soul. Without a free, vigorous and creative mind, man is but an animal, and he will die like an animal, without any shred of a soul. We return to man his arts, his literature, his sciences, his independence to think and feel as an individual, not to be bound to dogma like a slave, to rot in his chains." [...]

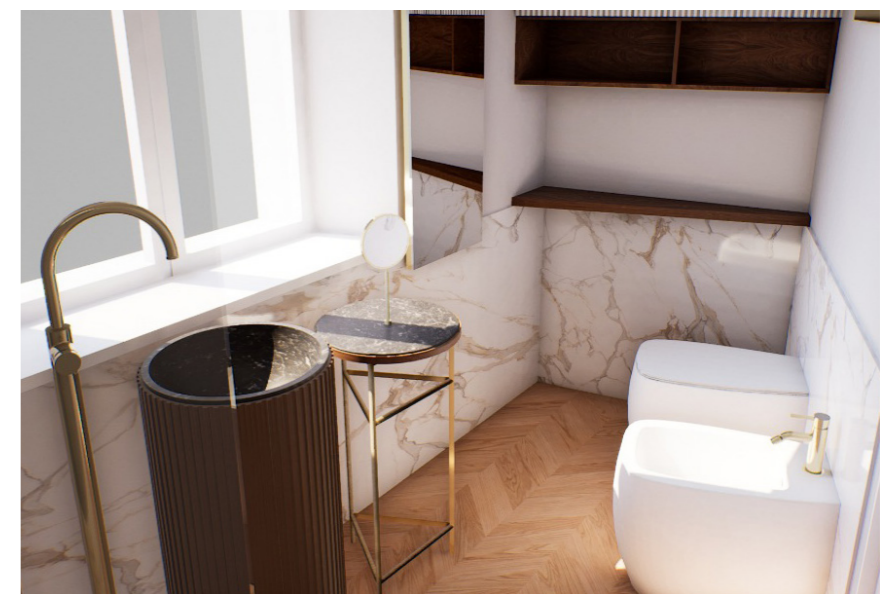
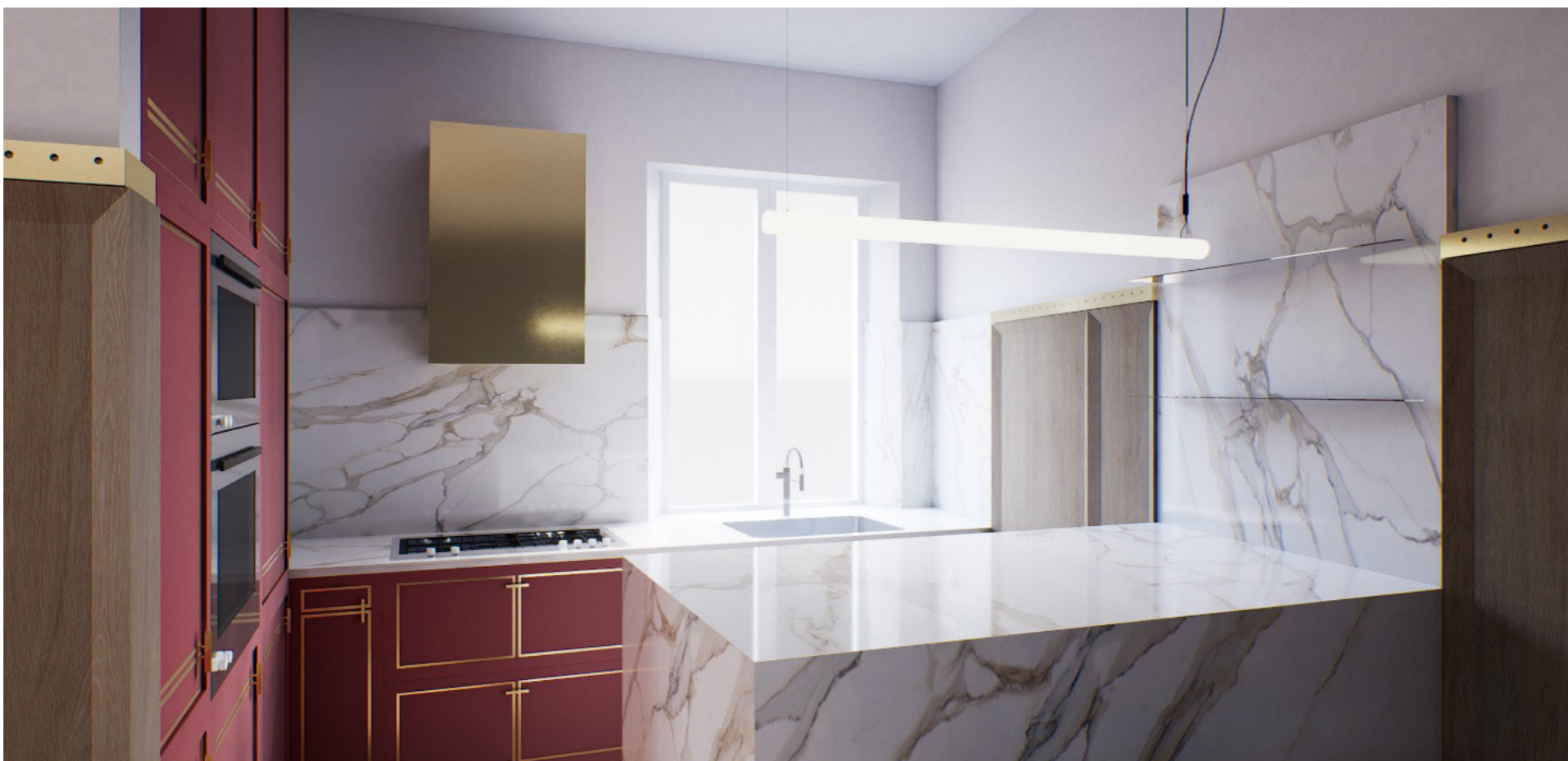
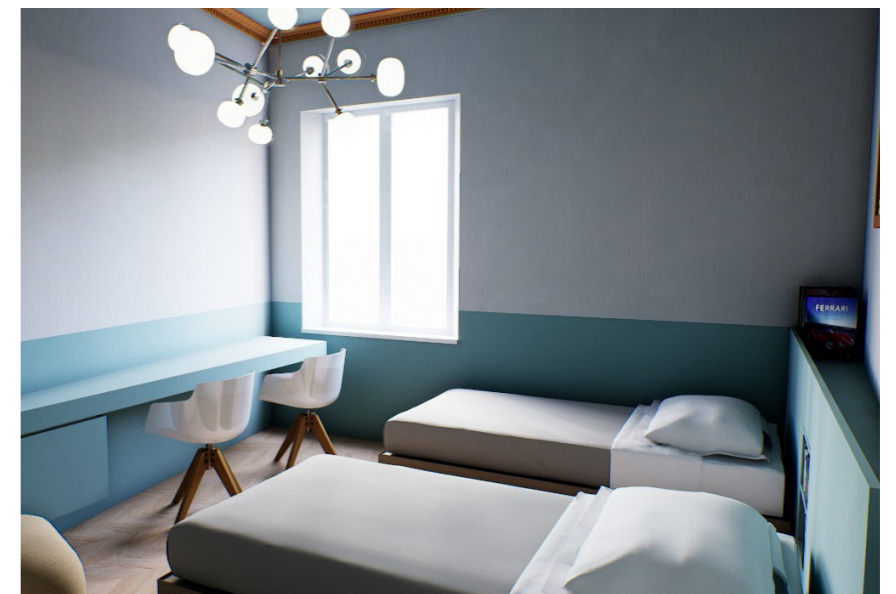
Castelfidardo, 3-floors build directly above the historic city walls, and one dug into the ancient walls fortress. On the top and out a 360° panoramic view of Conero seaside, down a classical sight of a middle-age hamlet: obtuse angles, small windows, steep stairs, solid doors, and crooked walls. Our goal consisted of re-organizing and refitting the functionality of the whole building. First, we re-designed the entrance with Calacatta Gold marble, and we enlarged the basement services. Then, we switched the fragmented first-floor into a large open space decorated by a natural ash boiserie, inserts in marble and brass. We recovered the fresco ceiling, and we added something new the complete the lost composition. The third-floor is for night time. Two bedrooms decorated with silk walls and painted ash boiserie to create a real renaissance atmosphere. For the bathroom, we used a free-standing sink to optimize the small space, and we designed a shower that works as a bathtub. We covered the vertical surfaces of the bathroom with 20mm thick marble. On top of the house, we designed a wood roof completed by a jacuzzi area defined by a Jardin d'Hiver. We conceived this project to satisfy the will of beauty expressed by the clients who are passionate about renaissance history and fine arts.



DATE: IN PROGRESS

LOCATION: CASTELFIDARDO (AN), IT

CLIENT: PRIVATE



First floor open space kitchen and living room, second floor bedrooms and bathroom



CACHE'

CITY APARTMENT RETROFIT

"I like intensity. If it's too mellow, I feel like, bleah. I like intensity, because it's a way of reaching spaces inside of you, and it's my need for knowledge, of knowing about myself regardless."

"Caché" is about a restyling of a 160 square meters apartment. State of the art is a sort of melting pot of useless space. The focus is on restoring the original fluidity of the interior and creating a correct composition. First of all, we decided to move the present entrance and second, we enlarged the terrace to design an interior garden. A bespoke bookcase defines the perimeter of the distribution space and works as a wall system rather than a hallway. Here, we placed a cocktail bar area and a working space area with a large desk. Following the bookcase, you will get to the living. Beautiful ribbon windows marked the lounge area and the kitchen space. A glass sliding doors separates the leaving area from the kitchen. The kitchen is equipped with an island for breakfast and a table with a bench for daily launch. We choose marble for the plan finishes because we want to put a material that can change its features with time and use. We'd love to have organic materials and use them as a value for this apartment. We filtered the night area with a screening room. In a false ceiling, we hide dimmable lights to modulate the enlightenment. We designed the sleeping area to guarantee privacy for any room. We placed the master bedroom with its bathroom close to the garden. The other two rooms (children, guests) are in the opposite part of the apartment, easily reachable for any demand. All pieces of furniture are bespoke designed, and we selected all finishes through a process that took into consideration the cycle of production and the origin of manufacture.

DATE: IN PROGRESS

LOCATION: ANCONA (AN), IT

CLIENT: PRIVATE



Screening room and bookcase

Master bedroom and bathroom



INDEX || Broken Dreams.

APOCALYPSE NOW - Fiasco's Mixtape

APOCALYPSE NOW

MIXTAPE OF UNBUILT PROJECT

[...] "Well, you see Willard, in this war, things get confused out there: power, ideals, the old morality, practical military necessity. But out there with these natives, it must be a temptation to be god, because there's a conflict in every human heart, between the rational and the irrational, between good and evil, and good does not always triumph. Sometimes, the dark side overcomes what Lincoln called the better angels of our nature. Every man has got a breaking point. You and I have one. Walter Kurtz has reached him, and very obviously, he has gone insane." [...]

APOCALYPSE NOW is a collection of broken dreams, disregarded expectations, and money lost. We mean, every designer, architect, or engineer knows that at least 50% of his work will go to hell.

The usual feelings about this fact are frustration, depression, or pure rage against the cruel fate and the whole obtuse world. Instead, we're going to get mellow and be zen.

So, here beside, we put just 2% of the interior design, accomplished from the beginning, as a witness of our effort and passion.

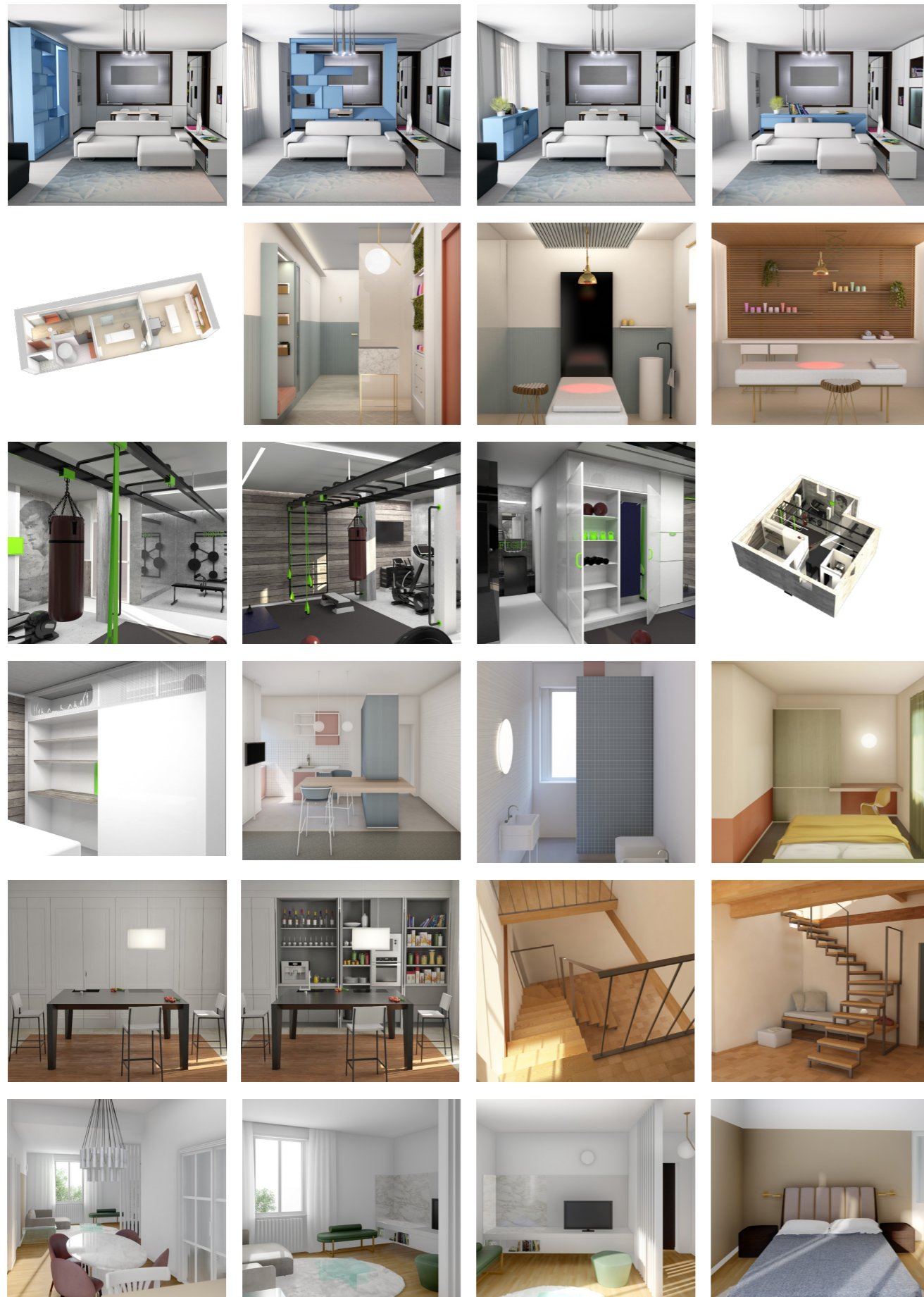
We dedicate this page to ourselves to remind us that the main goal is always getting better and better: an aborted project is due above all to us, no excuse!

The fact nevertheless remains that 90% of the clients are Neanderthals! ;)

DATE: 2014 - 2020

LOCATION: VARIOUS

CLIENT: VARIOUS



Broken dreams



02 | MANIFESTO

**CREATIVE DESIGN
IS FRESH**

*CREATIVE THINGS
ARE SMART*

EST platform is a multidisciplinary office, we do Architecture, Design, and we do Consult in case anyone asks. We don't make *Traditional Things* because, after all, having *One Style, One Size* and only *One Point of View* is a super boring *Lifestyle*.

We've been designing architecture, interior, and furniture professionally for *over 8 years*, but we've also been working outside of our habits when something/one fascinated us. We never are afraid to embrace our potential, and we never are afraid to transform ourselves into the best version we can be.

Nature, biology, science, and technologies are our inspiration.

With passion, love, curiosity, and resilience, commitment blended with the ability to think big and dream even bigger, **ANYTHING IS POSSIBLE.**



INFO

Via Berrnabei 12
60121, Ancona
ITALY

CONTACT

www.estplatform.com
info@estplatform.com
Ruben +39 3337341786
Stefano +393404072131
Giorgio +39 3337754253

SOCIAL

Linkedin
Instagram