

# DESIGN || Productions.



**✘ SELECTED || Works.**



### PRELUDE

*"I can't believe that!" said Alice.*

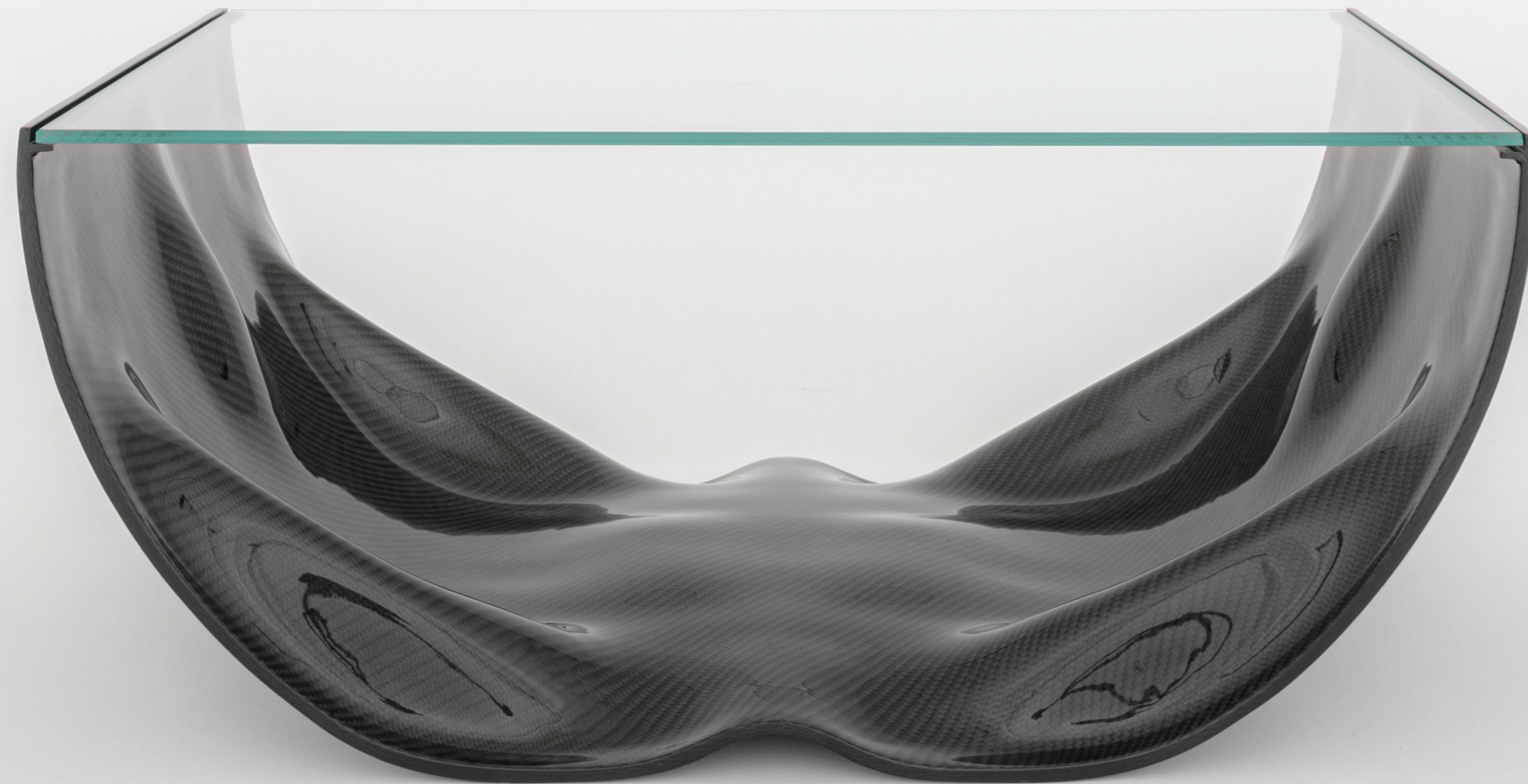
*"Can't you?" the queen said in a pitying tone. "Try again, draw a long breath, and shut your eyes."*

*Alice laughed. "There's no use trying," she said.*

*"One can't believe impossible things."*

*"I dare say you haven't had much practice," said the queen. "When I was your age, I always did it for half an hour a day. Why, sometimes I've believed as many as six impossible things before breakfast."*

"Alice in Wonderland", 1865, Lewis Carroll .

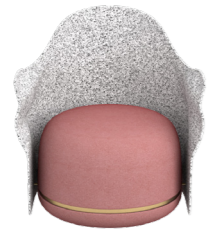


## **INDEX** || Anticipatory Design.

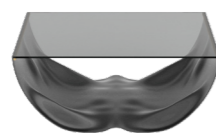
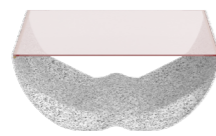
**SIMBIÒTICA** - Furniture Set in Advanced Material  
**AMPHIBIA** - 100% Regenerable Furniture Collection  
**3CSup<sup>®</sup>** - A unique generation of Ecofriendly Surfboard

*SIMBIÒTICA II - Cofee table in nano-epoxy, glass and carbon fiber*

**Simbiosi I**  
Armchair



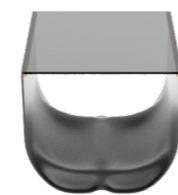
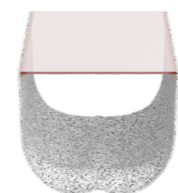
**Simbiosi II**  
Coffee table



**Simbiosi III**  
Pouf



**Simbiosi IV**  
Side Table



Cellulosa collection

Flax collection

Graphite collection

# SIMBIÒTICA®

## ADVANCED DESIGN FOR ADVANCED MATERIALS

*"I made a discovery," said Eniberlin when I walked in his room.  
"On what?" I asked. "A discovery," he said, "on discoveries".  
His uncanny satisfaction shone in his face; the speech evidently had gone just as he had intended it.. [...]*

**SIMBIÒTICA** is about a research on materials symbiosis, among organic (cellulose pulp, natural fiber, water based resins) and synthetic (fiber glass, carbon fiber, bio epoxy resins). All the Simbiotica shape's are the result of an optimization process among loads, strengths, tension and materials, all in balance , all in symbiosis.

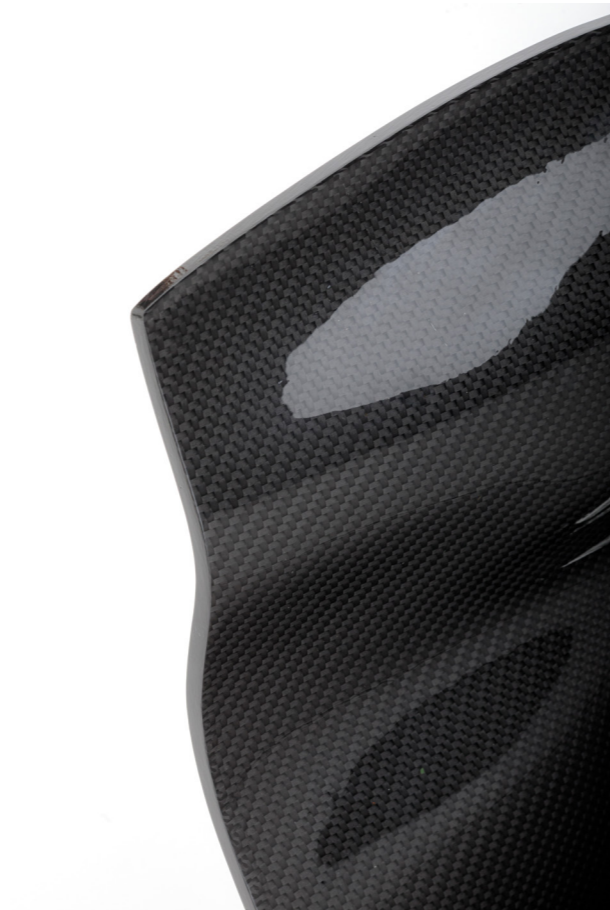
**SIMBIÒTICA** is a collection that pushes the boundaries between material structure and shape into a new modern territory made by a new aesthetical concept in a real sustainability perspective.

**ELEMENT:** ARMCHAIR, COFFEE TABLE, POÛF, SIDE TABLE

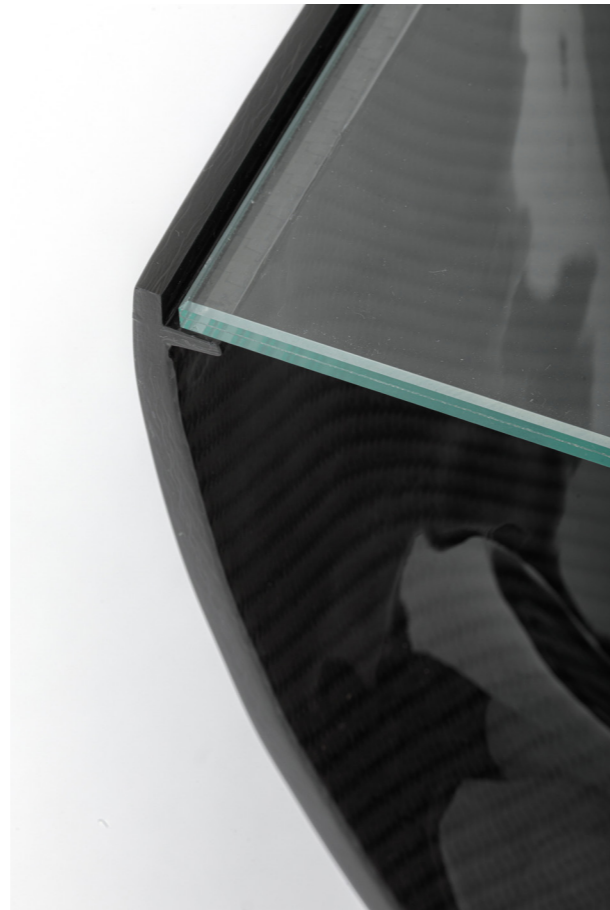
**PRODUCED BY:** NANO-TECH SPA

**CLIENT:** EVERYDAY YACHT, VALLETTA, MALTA





Details



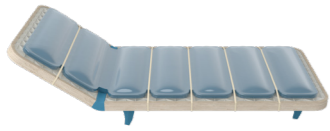
EST PLATFORM



*SIMBIÒTICA I and SIMBIÒTICA II at SeaPort Hotel, Ancona, Italy*

DESIGN

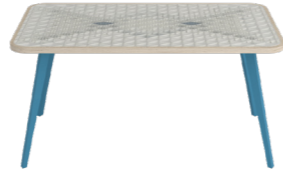
**Bufo Bufo**  
Deckchair



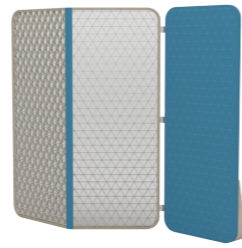
**Bombina**  
Chair



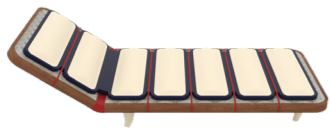
**Tritone**  
Table



**Mantella**  
Divider



*Nice Edition*



*Cannes Edition*

# AMPHIBIA®

## REFORMIST DESIGN FOR SUSTAINABILITY

*[...] "Don't be a fish, be a frog!" said professor Kim Young-Ha jumping on the small stage of the university's theater "So guys, swim in the water and jump when you hit ground." That's when we knew that it would be a big night for us [...]*

**AMPHIBIA** is marked by mathematical patterns that built the perfect function of each element. An apparently simple design that through an accurate study of engineering and high precision, achieving the right resistance durability for an hybrid use on water and on earth.

A waterproof cardboard core and a bio based resin shell get the Amphibia's surfaces strong and extremely light. The structural patterns are algorithmic designed and engineeringally calculated. Computational science became design.

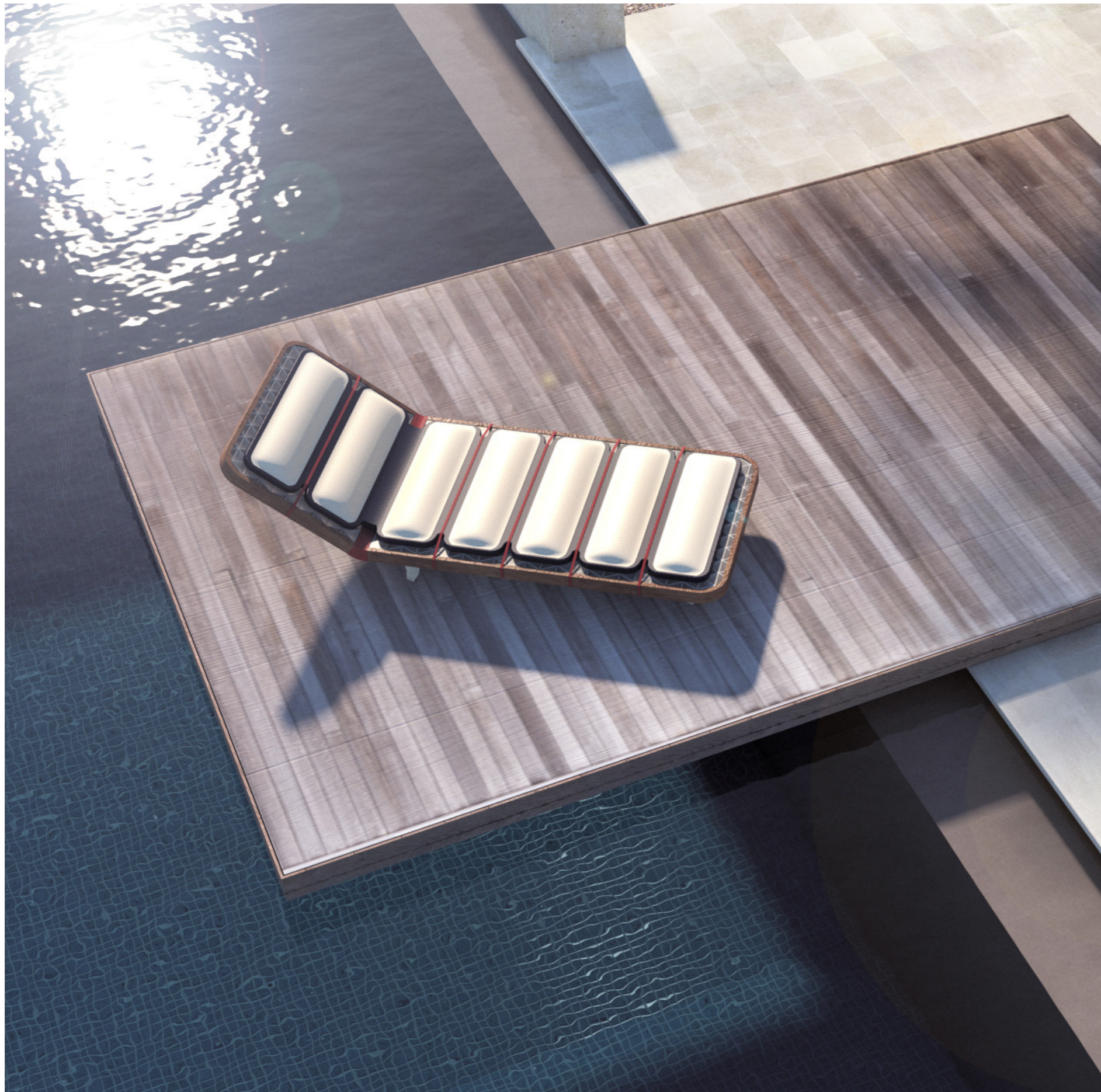
Two nature in one essence...



**ELEMENT:** DECKCHAIR, CHAIR, TABLE, DIVIDER

**PRODUCED BY:** NERD SRL

**CLIENT:** YOTHA CHARTER OFFICE, NICE, FRANCE



*BUFO BUFO, Deckchair, 100% regenerable materials. Cannes, France.*



*TRITONE Table and BOMBINA Chair Details*



*MANTELLA Divider Details*







# 3CSup®

## A UNIQUE GENERATION OF CUSTOM, CLEAR, CARDBOARD BOARDS

*[...] "Consider the subtleness of the sea; how its most dreaded creatures glide under water, unapparent for the most part, and treacherously hidden beneath the loveliest tints of azure..... Consider all this; and then turn to this green, gentle, and most docile earth; consider them both, the sea and the land; and do you not find a strange analogy to something in yourself?"[...]*

**3CSup®** is a radical proposal for a new generation of green boards and equipment, launched at Milan Design Week 2018. Behind its process, there is a deep studio about the killing of waste materials after the manufacturing phase.

**3CSup®** was designed through an algorithmic process.

**3CSup®** won an honorable mention at "**Compasso d'Oro International Award 2018**" (Section - Sport: Performance and Innovation) and gained an honorable mention at **Raw Plastic Prize 2019** by **Rossana Orlandi**.

**3CSup®** collection was displayed at **Milano Fuori Salone 2018** and during the **London Design Week 2019**.

**ELEMENT:** SUP WAVE, SUP CRUISING, SURFBOARD

**PRODUCED BY:** NODE EXPERIENCE

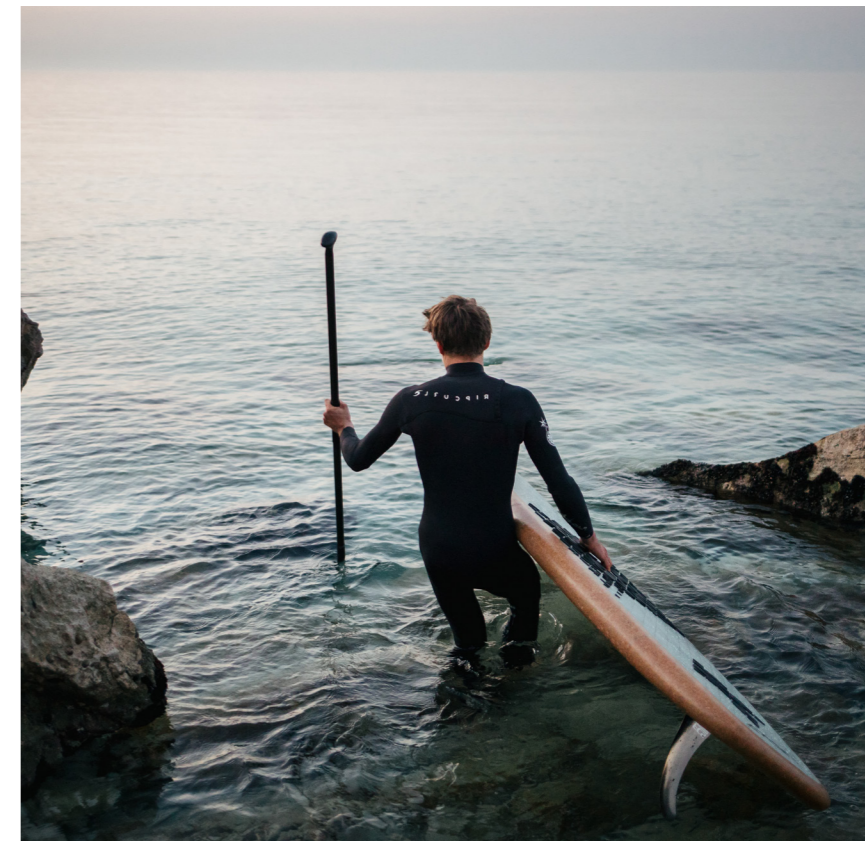
**CLIENT:** PRIVATE



2018 HONORABLE MENTION  
ADI - COMPASSO D'ORO  
INTERNATIONAL AWARD



*3CSup® designed to decrease the use of toxic materials in surfboard industry. Riviera del Conero, Italy.*



*3CSup®, Boards on water*





## **INDEX** || Custom Collections.

**YOKAI** - 100% Organic Furniture for Magna Pars  
**LIGHT LINKS** - Tube Lights for BB oggetti d'arte  
**DNA** - Wood Counter for KOS Group, Villa dei Pini

*INU - Chair texture in cork, cardboard and ashwood*

ANTICIPATORY DESIGN PRODUCTIONS AND CUSTOM COLLECTIONS



# YOKAI

## DEVOTED TO NATURE DESIGNED BY ALGORITHM

*[...] "Hey, what is it with you? Why are you so spaced out? You still haven't answered me." I probably still haven't completely adapted to the world," I said after giving it some thought. "I don't know, I feel like this isn't the real world. The people, the scene: they just don't seem real to me."*

*Midori rested an elbow on the bar and looked at me.*

*"There was something like that in a Jim Morrison song, I'm pretty sure." People are strange when you're a stranger." [...]*

**YOKAI** is inspired by a class of supernatural monsters, spirits and demons in Japanese Folklore. The word *Yōkai* is made up of the kanji for "bewitching; attractive; calamity," and "spectre; apparition; mystery; suspicious". The name perfectly defines the essence of the collections: extremely light and clear, the shapes and geometries of tables and chairs appear to the observer as supernatural appearance.

**YOKAI** collection was designed for Magna Pars Event Space and displayed at Fuorisalone 2018.

Composed of table, chair and a coffee table, the Yokai Collection is made completely from recycled materials, the furniture can be totally disassembled to allow for each specific part to be replaced.

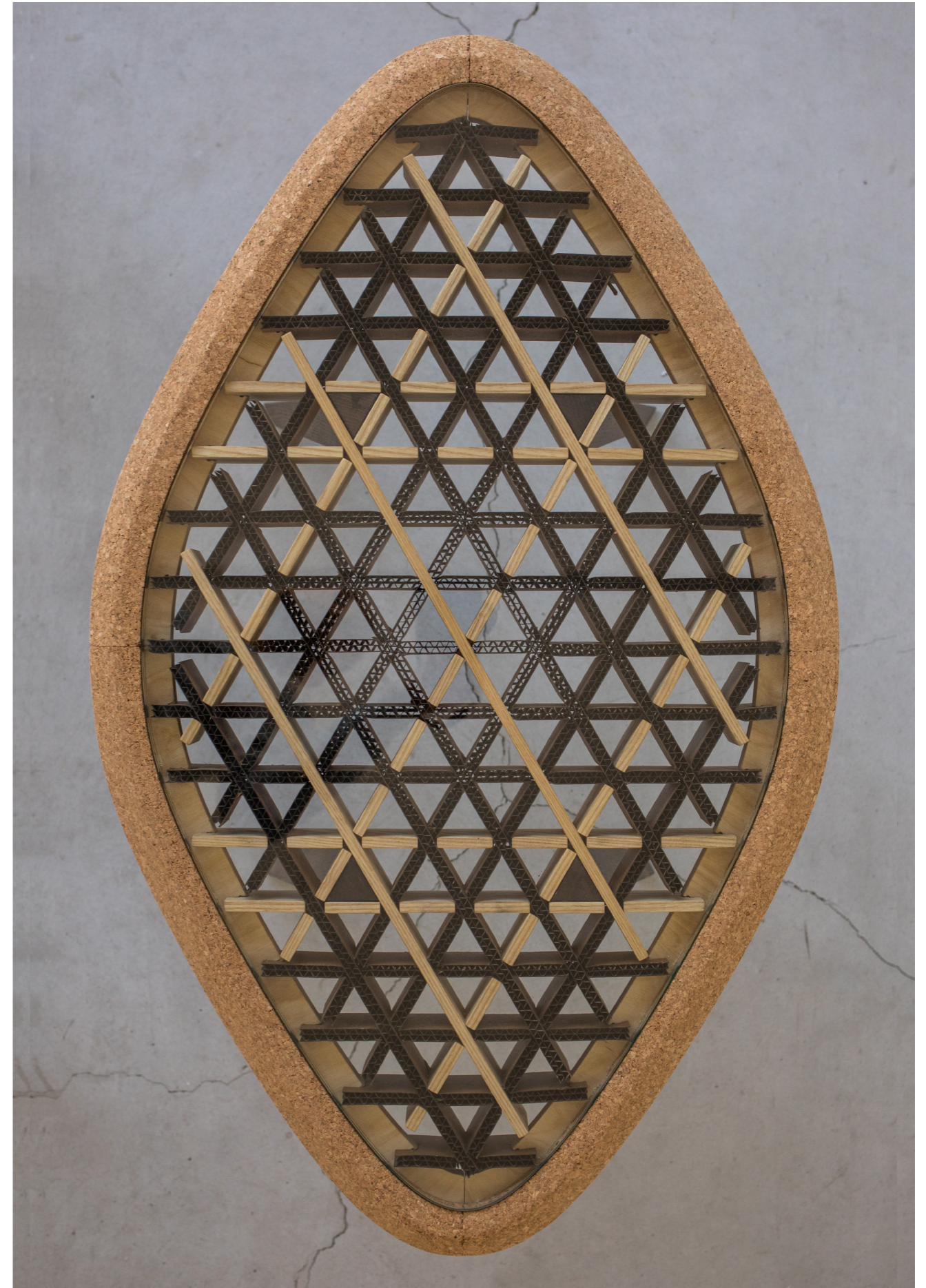
**ELEMENT:** TABLE, COFFEE TABLE, CHAIR

**PRODUCED BY:** FEVAL SNC

**CLIENT:** MAGNA PARS EVENT SPACE



Details



*BAKU - YOKAI COLLECTION, Coffee Table displayed at Magna Pars Event Space, Milano, Italy*



# LIGHT LINKS

## LIGHTING PROJECT FOR FLOATING PROFILE

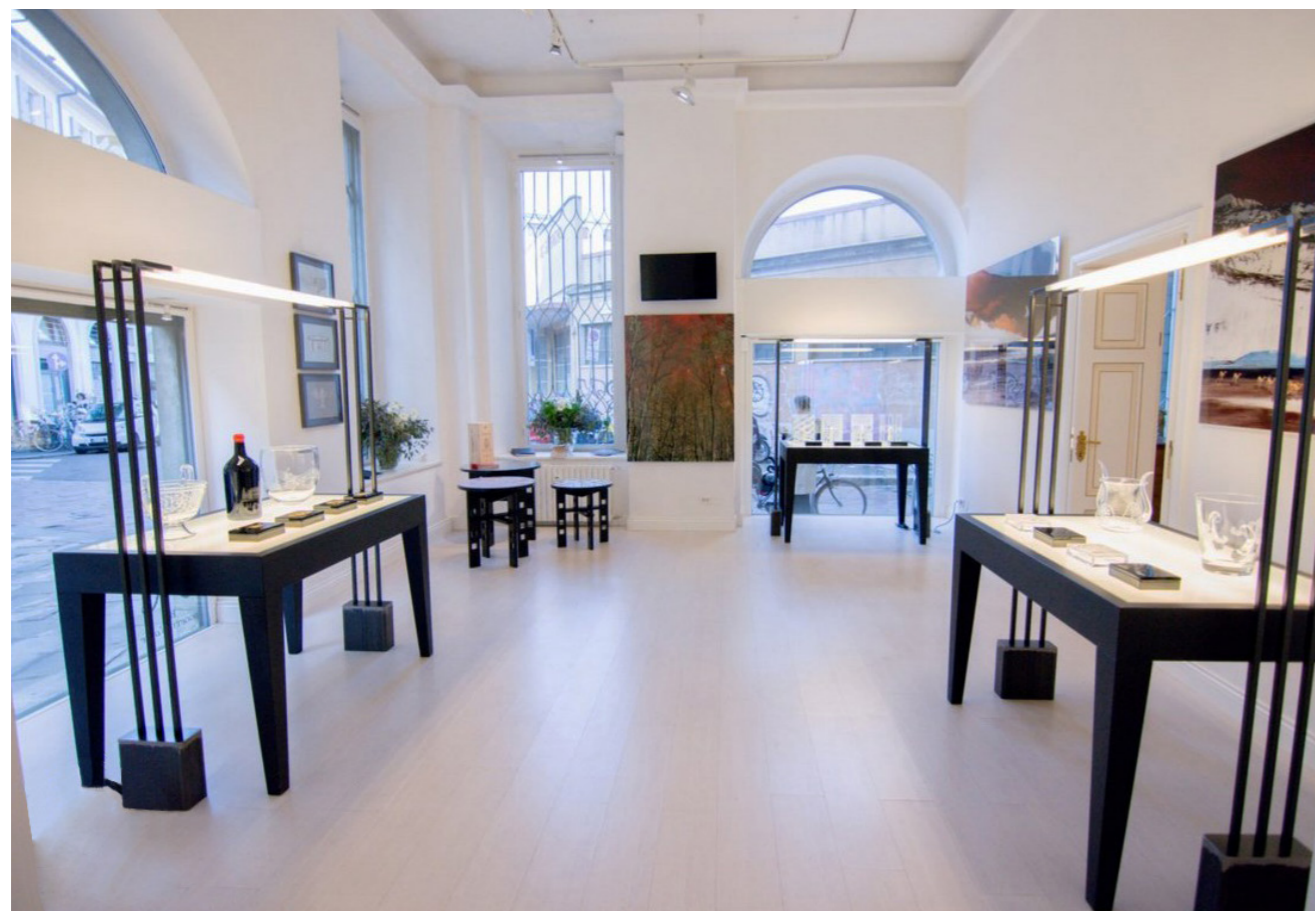
*[...] "And now here is my secret, a very simple secret: It is only with the heart that one can see rightly; what is essential is invisible to the eye." [...]*

**LIGHT LINKS** it's a project that investigates how two light sources can interact with each other.

The dynamic modulation and the way to bounce on the surfaces were the parameters to control.

**LIGHT LINKS** uses two light sources, one diffuses into a planar satin surface from below, and the other trapped into a satin tube from the top. The aim is to create at the same time a dematerialized plane as a basement for the objects and generate a light veil around the glass objects. This system, enhanced by the quality of the glass, creates a light aura around the objects that makes them float in the space.

**LIGHT LINKS** is composed of tables and floor lamps in wood and rough iron.



**ELEMENT:** LIGHT TABLE, FLOOR LAMP

**PRODUCED BY:** GIBAS

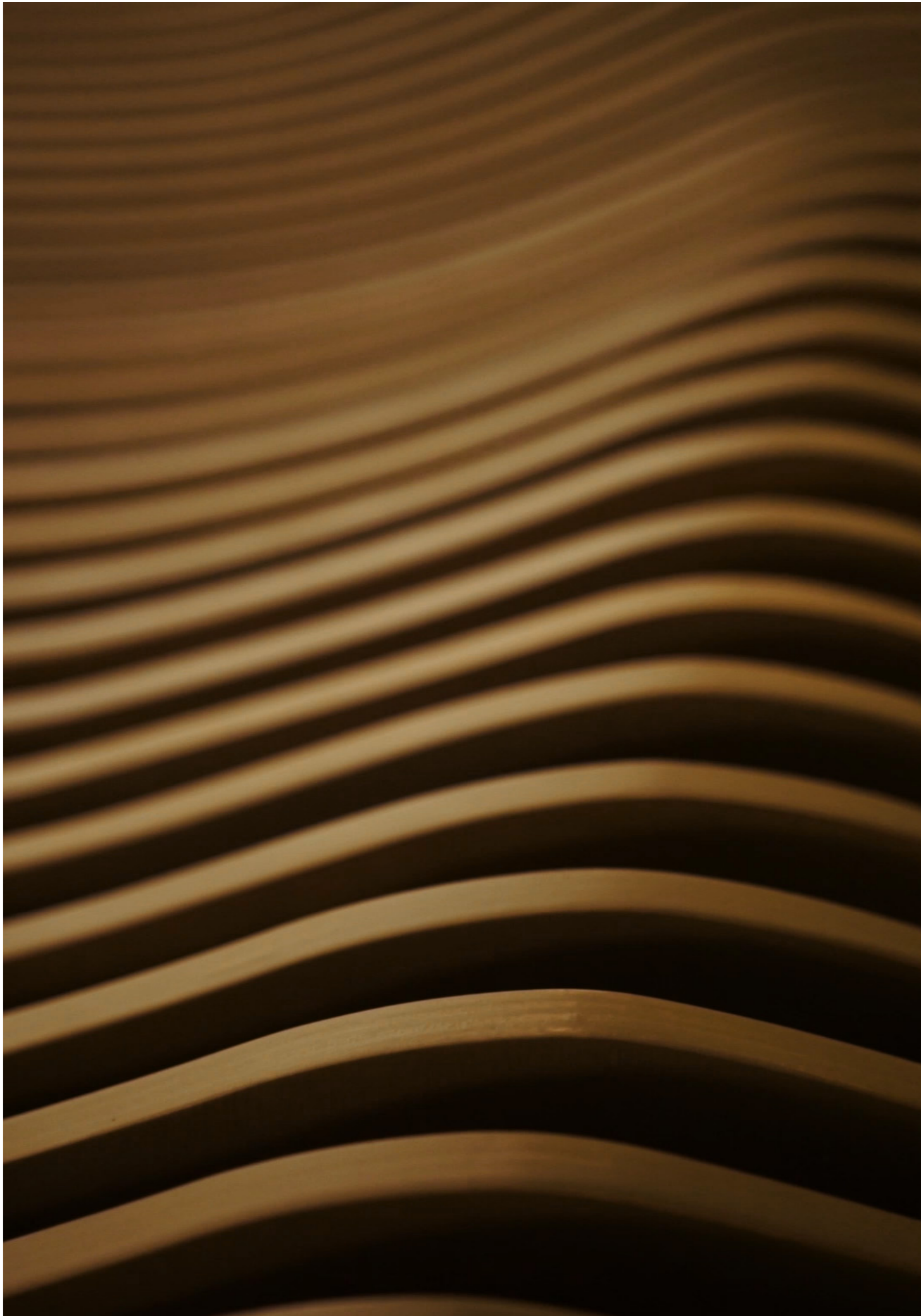
**CLIENT:** BB OGGETI D'ARTE



Details



*LIGHT LINKS table and floor lamp at Fuorisalone, Milan, Italy*



# DNA

## Exploration of deoxyriboNucleic bonds shape with wooden structures

*[...] “Everything tells me that I am about to make a wrong decision, but making mistakes is just part of life. What does the world want of me? Does it want me to take no risks, to go back to where I came from because I didn’t have the courage to say “yes” to life?” [...]*

**DNA** design it’s inspired by the “genius loci” of the place.

We had an assignment from KOS Group to design two wooden counter for one of their nursing home. The place is a beautiful modernist building located at the top of the hill in front of the sea. Walking through the structure, the thing that struck us most was the close bonds built among patients, nurses, and doctors, a very empathic and natural connection.

The willingness to show these bonds in something real determined the aesthetic of the project. The counters are at the main entrance of the hospital, so they are the first thing that you can see if you go there. We used the shape of a DNA molecular structure to declare the atmosphere in this nursing home. When someone gets in a hospital for any reason, very often, its feelings are unpleasant and rich with anxiety. With this design, our goal was to create an entrance room with something unusual that might be temporarily distracted the attention of the patient from its condition and have a relaxing function. We used ash wood for components, and we’ve finished them with a solvent-free paint to keep the natural essence of the wooden surfaces.

**ELEMENT:** TICKET COUNTER, BOOKING COUNTER

**PRODUCED BY:** FEVAL SNC

**CLIENT:** KOS GROUP





Details



Details



DNA counters at Villa dei Pini, Civitanova Marche (MC), Italy





03| MANIFESTO

# INNOVATIVE DESIGN IS EXPERIMENTAL

*EXPERIMENTS*

*INVOLVE RISK*

**EST platform** is a multidisciplinary office, we do Architecture, Design, and we do Consult in case anyone asks. We don't make *Traditional Things* because, after all, having *One Style, One Size* and only *One Point of View* is a super boring *Lifestyle*.

We've been designing architecture, interior, and furniture professionally for *over 8 years*, but we've also been working outside of our habits when something/one fascinated us. We never are afraid to embrace our potential, and we never are afraid to transform ourselves into the best version we can be.

Nature, biology, science, and technologies are our inspiration.

With passion, love, curiosity, and resilience, commitment blended with the ability to think big and dream even bigger, **ANYTHING IS POSSIBLE.**



## INFO

Via Berrnabei 12  
60121, Ancona  
ITALY

## CONTACT

[www.estplatform.com](http://www.estplatform.com)  
[info@estplatform.com](mailto:info@estplatform.com)  
Ruben +39 3337341786  
Stefano +393404072131  
Giorgio +39 3337754253

## SOCIAL

Linkedin  
Instagram